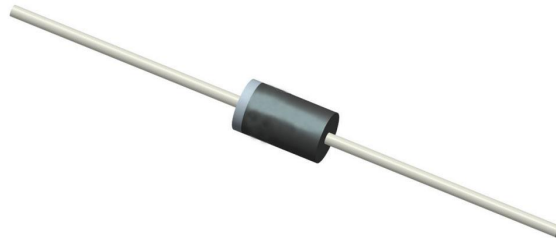


1. Finish Goods PKG photo



2. Packing method



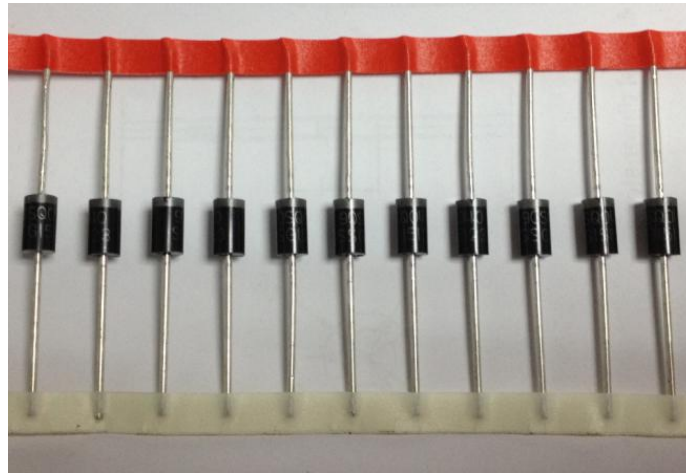
Fig.1- Reel pack for Axial Lead

Table 1. Packing information

| Package version | SPQ/PQ (pcs) | Tabes per box | Inner box dimensions L×W×H (mm) |
|-----------------|--------------|---------------|---------------------------------|
| DO-201AE | 3000 | 1 | 255*80*148 |

3. Product orientation

Standard product orientation DO-201AE



→
direction of feed

Fig 2. Product orientation in carrier tape

4. Carrier tape dimensions

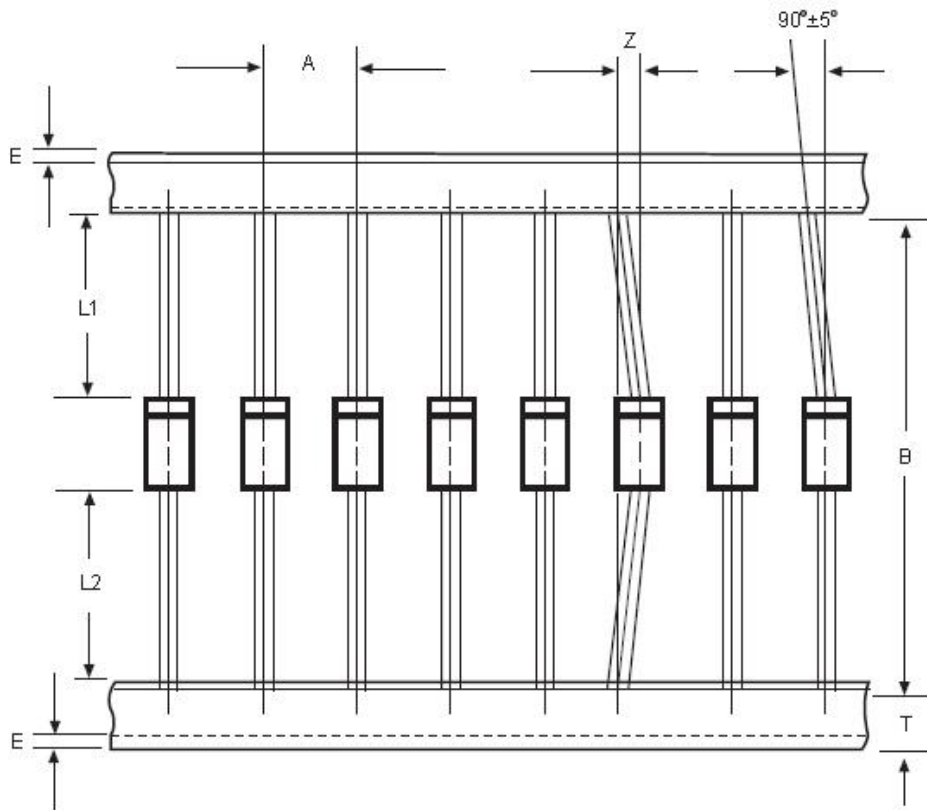


Fig 3. Carrier tape dimensions

Table 2. Carrier tape dimensions

| COMPONENT OUTLINE | COMPONENT PITCH A | INNER TAPE PITCH B | | CUMULATIVE PITCH TOLERANCE |
|----------------------|-------------------------------|----------------------------|--------------------------------|----------------------------------|
| | $\pm 0.5\text{mm}$ (.020") | $\pm 0.5\text{mm}$ (.020") | $\pm 1.5\text{mm}$ (0.059") | |
| DO-201AE | 10.0mm | | 52.4mm | 2.0mm/10pitch |
| ITEM | SYMBOL | SPECIFICATIONS(mm) | SPECIFICATION(inch) | |
| Component alignment | Z | 1.2max. | 0.048max. | |
| Tape width | T | 6.0 ± 0.4 | 0.236 ± 0.016 | |
| Exposed adhesive | E | 0.8max. | 0.032max. | |
| Body eccentricity | IL1-L2I | 1.0max. | 0.040max. | |
| Reel inner diameter | D1 | $85.7 + 0.3$ | 3.375 ± 0.012 | |